

Internal Chamfer Gauge IFM **IFM**

FOR DIRECT MEASURING THE MAJOR DIAMETER OF INTERNAL CHAMFERS AND TAPERS

Delivery with a special ratio dial gauge (reading 0,01 mm) for indication of measuring result. Holder with 90° or 127° taper. The gauge is preset.

INTERNAL CHAMFER GAUGE IFM

type	measuring range [mm]	Code
IFM 20/90°	0,5 - 20	194 00000
IFM 40/90°	20 - 40	194 00001
IFM 20/127°	0,5 - 20	194 00011
IFM 40/127°	20 - 40	194 00012

taper 60° on inquiry

SPARE PARTS IFM

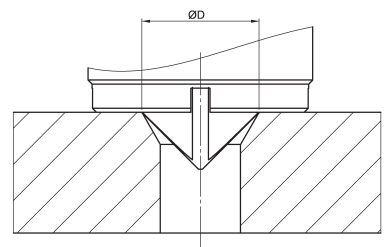
type	Code IFM 20	Code IFM 40
special dial gauge for 90°	194 10006	194 10016
holder with 90° taper	194 00003	194 00004
special dial gauge for 127°	194 10017	194 10017
holder with 127° taper	194 00005	194 00006

taper 60° on inquiry

SERIES 194



IFM Internal Chamfer Gauge



measuring principle IFM

Chamfer Length Measuring Gauge FLM **FLM**

TO MEASURE THE OUTSIDE OR INSIDE CHAMFER LENGTH

Smallest bore \varnothing 6 mm, min. chamfer length 0,2 mm, max. chamfer length 5 mm, chamfer angle $\geq 30^\circ$. Delivery including setting piece as sharp edge ring and with depth gauge.

CHEMFER LENGTH MEASURING GAUGE FLM

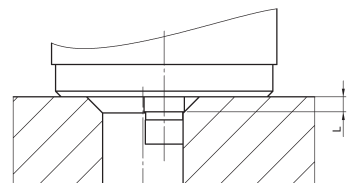
type	Code
chamfer length measuring gauge FLM	194 00100

SPARE PARTS FLM

type	Code
depth gauge	194 00102
setting piece	194 00103



FLM Chamfer Length Measuring Gauge



measuring principle FLM