

Automatic test device with workpiece store

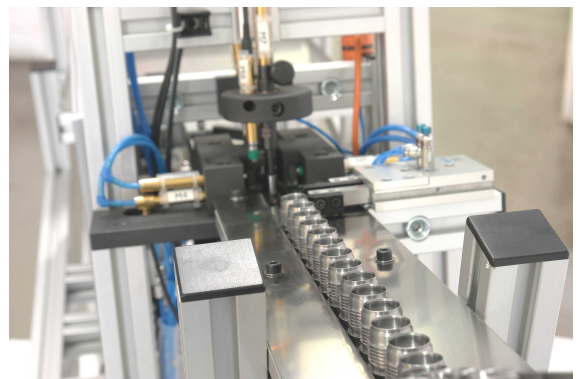
Description:

- Test device for turned parts for measuring outer and inner diameters as well as height dimensions at the same time
- Workpiece feed using buffer store, which is loaded manually
- By using a spring separator, parts are supplied to the tester
- Automatic sorting of good and bad parts by a sorting flap
- Cycle time 5 s
- Buffer store for measured parts with automatic cut-off when it's clogged



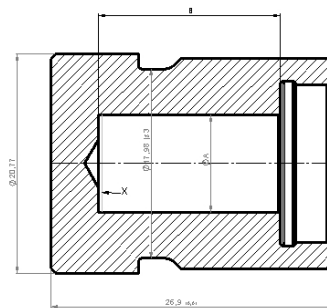
Testing method:

- Altogether, there are 8 pneumatic in-fed inductive measuring probes for following diameters (in mm):
 $D1 = 20.77$
 $D2 = 17.98$
 $D3 = 10.72$
 as well as bore depth:
 $B = 16.9$
 and total length:
 $L = 26.9$
- Attributive characteristic: existence of a bore by testing the dynamic pressure



Dimensions:

Length x width x height: 1750 x 500 x 1400



workpiece